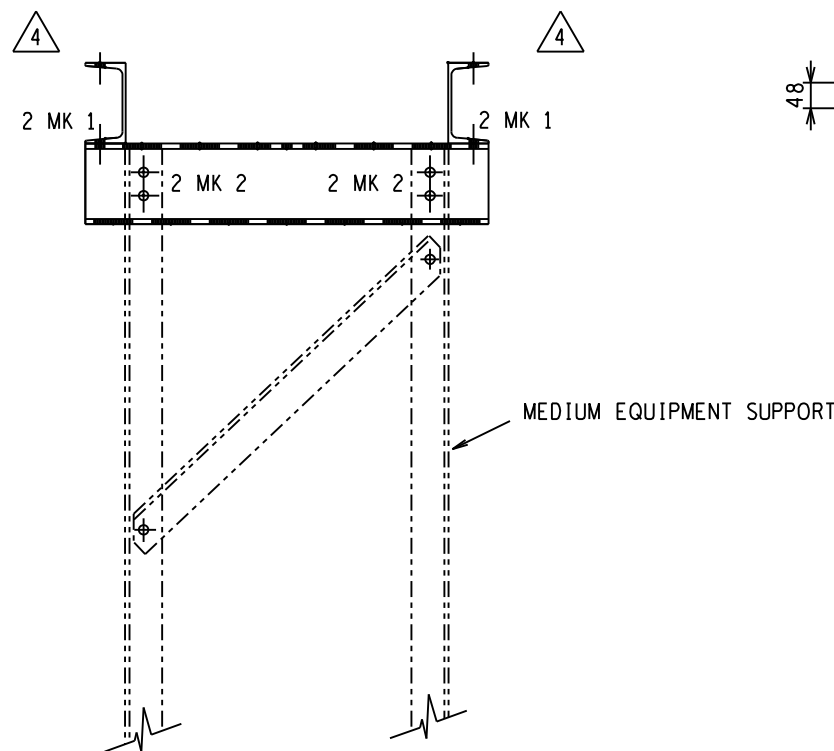
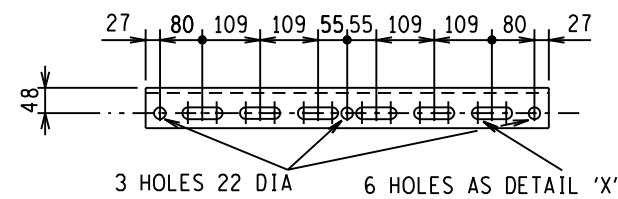


PLAN VIEW

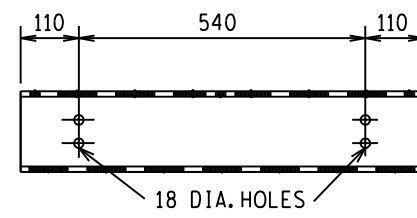


ASSEMBLY OF CAP

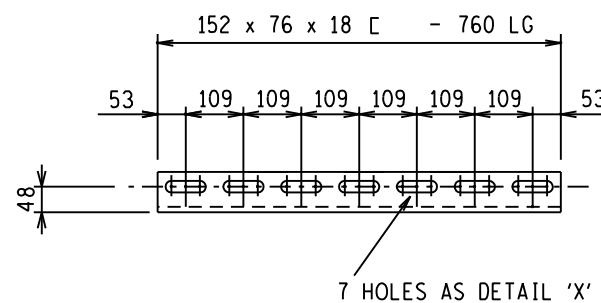
ALL PARTS $\textcircled{3EQ 1}$ MAY BE USED EITHER AS SHOWN OR UPSIDE DOWN, AS REQUIRED, TO GIVE THE DESIRED FIXING CENTRES. THIS TO BE DETERMINED AT SITE DURING ERECTION.



TOP VIEW



FRONT VIEW



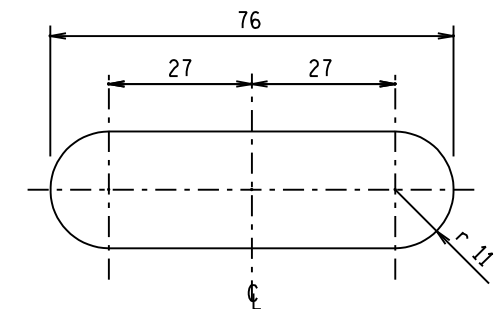
BOTTOM VIEW

MK $\textcircled{3EQ 1}$ 4 - OFF REQD.

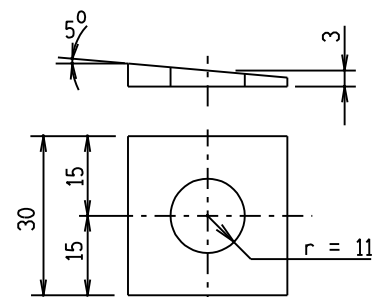
BOLT SCHEDULE (STRENGTH GRADE 4.8)				
MK	DIA	LENGTH	No OFF	WASHER/BOLT
1	M 20	50	4	2 BEVELLED
2	M 16	40	8	1 FLAT

BOLTS NOTE: ALL BOLTS TO BE GALVANISED.

MASS IN kg		
STRUCTURE	BOLTS	TOTAL
55	2,2	57,2



HOLE - DETAIL 'X'
SCALE 1 : 1



SPECIAL TAPERED STEEL HARDENED WASHER REQUIRED WHERE EQUIPMENT MANUFACTURER SPECIFY M20 FIXING BOLTS. FOR NUMBER OFF, REFER TO EQUIPMENT LAYOUT.

SPECIAL WASHER.

NOTES :

- ALL STEELWORK TO BE HOT DIP GALVANISED TO S.A.B.S. 763.
- ALL MARKS TO BE STAMPED ONTO STEELWORK AND SHALL BE CLEARLY LEGIBLE AFTER GALVANISING.
- ALL STEELWORK FABRICATED, ERECTED AND LEVELLED TO A TOLERANCE OF $\pm 1,5\text{mm}$.
- ALL HOLES $\phi 22$ UNLESS OTHERWISE STATED.
- ALL BOLTS SECURING EQUIPMENT TO THIS STRUCTURE TO BE SUPPLIED BY EQUIPMENT CONTRACTOR.

4	DJC.S	18.8.2010	SPECIAL WASHER ADDED & Mk 3EQ NOTE 4 & BOLT SCHEDULE REV.	PHD	DJC.S	297	CAP 'M4' M20 P.C.D.
3	A.C.B.	25.7.1986	REDRAWN ON CAD, BOLTS & NOTES REVISED	V.P.H.	J.D.S.	298	CAP 'M3' M16 P.C.D.
2	R.D.M.	29.9.1974	BOLT SCHED. ALTERED, NOTE RE. 22 DIA HOLES ADDED	S.V.D.M.	A.R.	306	CAP 'M1' M16
1	R.D.M.	28.8.74	22 DIA HOLE ADDED TO IT. 3EQ1	A.R.		305	MED.SUPP.4000 HIGH
0			FIRST ISSUE / EERSTE UITREIKING			304	MED.SUPP.3500 HIGH
						303	MED.SUPP.3000 HIGH
						302	MED.SUPP.2500 HIGH
						301	MED.SUPP.2000 HIGH
REV	AUTH	DATE	REVISION/REVISED		BY	CHKD	0.54/
			INDEX REF/INDEXSVIEW		DEUR	NAGES	REFERENCE DRAWINGS
DRG.TEK			S2, S9				VERWYSINGSTEKENINGE
REGISTR			SOUTH AFRICA		ESKOM • EVKOM		
			SUID AFRIKA		MEDIUM EQUIPMENT SUPPORT CAP'M2'		
					ADJUSTABLE FIXING CENTRES		
					100 TO 706 x 100 TO 706 M20 FIXINGS		
CHKD	P.J.G.	15.1.1974	APPROVED		GOEDGEKEUR	0.54/307	
DRAWN	P.C.B.	15.1.1974			P. PEARCE	4	
GETEKEN							
SCALE	1 : 10				11.7.73		
SKAAL							

THIS DRAWING HAS BEEN CREATED ON C.A.D. SYSTEM AND ANY AMENDMENT TO THE DRAWING MUST BE EFFECTED ONLY ON THE SAME C.A.D. SYSTEM

PLOT SCALE: 100:1